

THE CLEAN SOLUTION™ ALTERNATIVE SEPTIC SYSTEM MODEL CR-SAN4000 FOR 4,000 GPD CHINESE RESTAURANT

TANK SCHEDULE:

GT-1: Grease Trap (By Others)

GT-2: Grease Trap (By WAI)
3,100 Gallon, 2-Compartment (1,500/1,600 gal)
Standard Duty
15'0"L x 8'0"W x 5'10"H
Inv. In: 4'8", Inv. Out: 4'5"

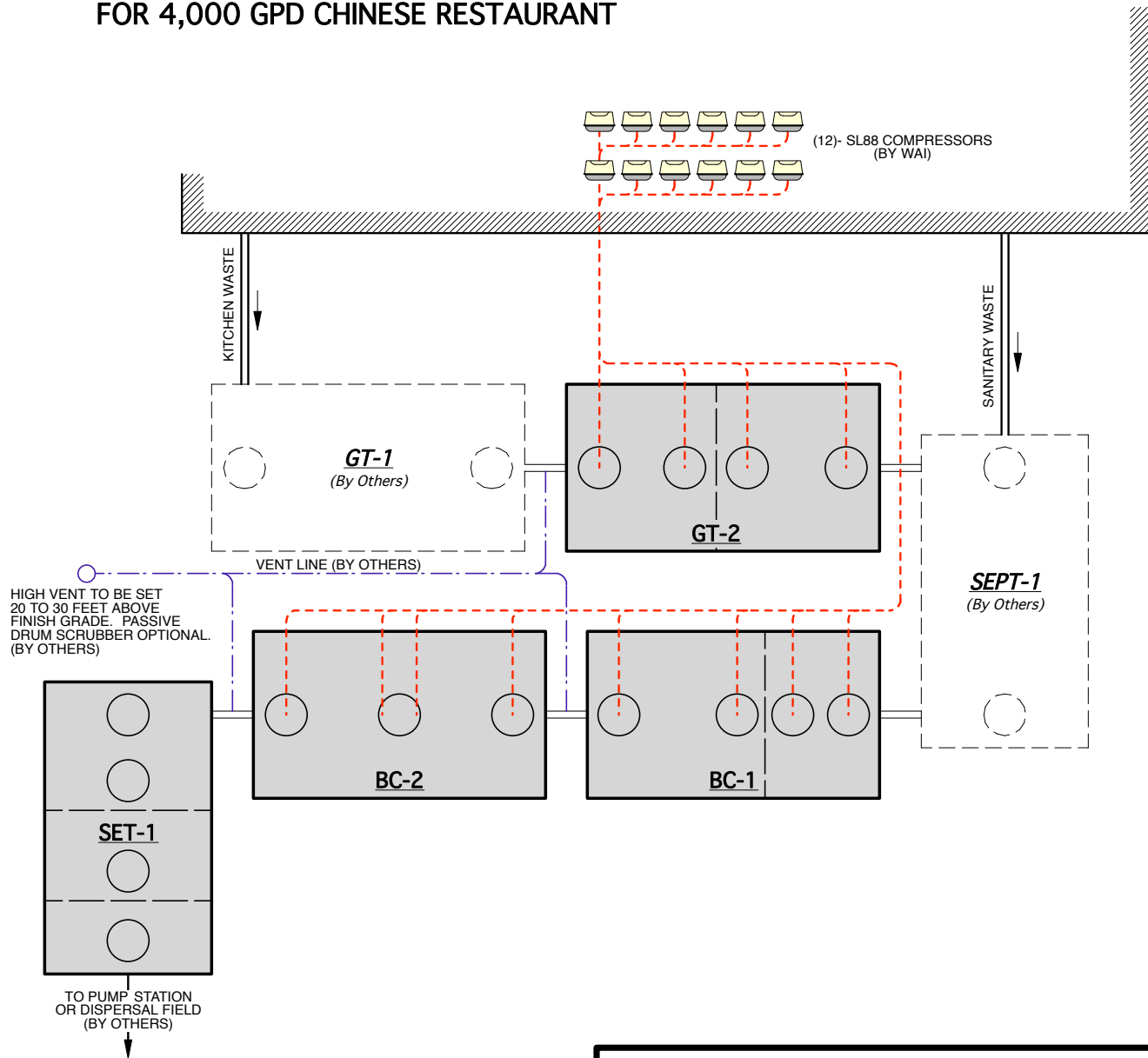
SEPT-1: Septic Tank (By Others)

BC-1: BioCon Tank (By WAI)
3,500 Gallon, 2-Compartment (1,500/2,000 gal)
Standard Duty
14'0"L x 8'0"W x 6'10"H
Inv. In: 5'7", Inv. Out: 5'4"

BC-2: BioCon Tank (By WAI)
3,500 Gallon, Single Compartment
Standard Duty
14'0"L x 8'0"W x 6'10"H
Inv. In: 5'7", Inv. Out: 5'4"

SET-1: Settling Tank (By WAI)
3,500 Gallon, 3-Compartment (1,600/1,100/800 gal)
Standard Duty
14'0"L x 8'0"W x 6'10"H
Inv. In: 5'7", Inv. Out: 5'4"

Note: Inverts listed are for 4" diameter.



WASTEWATER ALTERNATIVES, INC.
THE CLEAN SOLUTION™
11 Hethlon Road
Canterbury, NH 03224
Tel. 1-866-900-2415 Fax. 603-783-4499
www.thecleansolution.com